

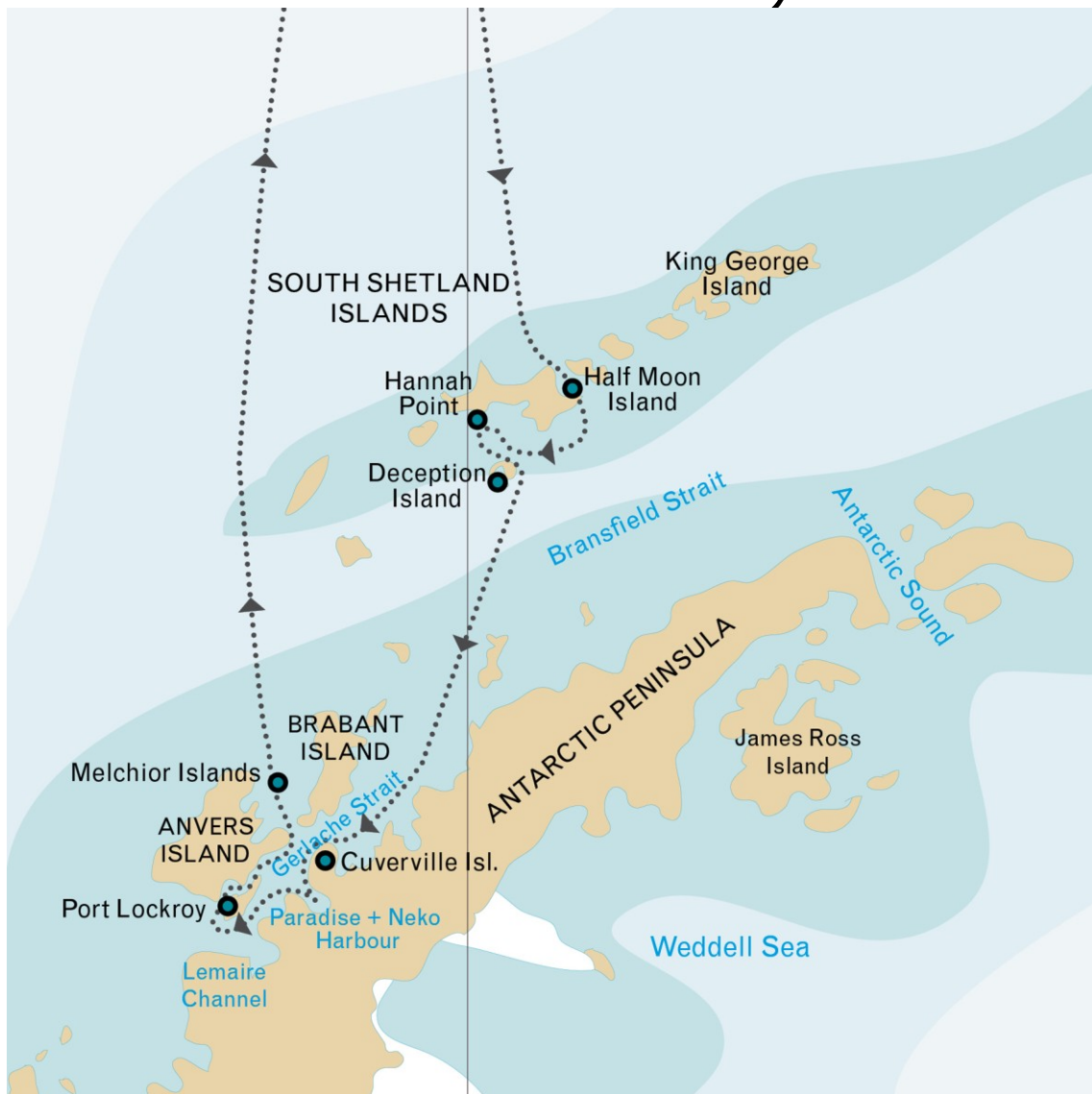


# Antarctic Peninsula (incl. the South Shetland Islands)



**MV PLANCIUS**

# Antarctic Peninsula (incl. the South Shetland Islands)



## Itinerary

**Day 1:** In the afternoon, we embark in Ushuaia, Tierra del Fuego, Argentina, the southernmost city in the world located in the shadow of the Andes and right at the Beagle Channel shore. We'll sail through this scenic waterway during the afternoon.

**Day 2 – 3:** During these two days we sail across the Drake Passage. When we cross the Antarctic Convergence, we arrive in the circum-Antarctic upwelling zone. In this area we may see Wandering Albatrosses, Grey Headed Albatrosses, Black-browed Albatrosses, Light-mantled Sooty Albatrosses, Cape Pigeons, Southern Fulmars, Wilson's Storm Petrels, Blue Petrels and Antarctic Petrels. Near the South Shetland Islands, we glimpse at the first icebergs.

**Day 4- 8:** *A typical itinerary in the South Shetlands and Antarctic Peninsula could be as follows. This is a sample only, the final itinerary will be determined by the Expedition Leader on board.*

We start our first day in the South Shetland Islands with a landing at either Half Moon Island or Hannah Point, where we will find a nice variety of Gentoo Penguins, Chinstraps and southern Giant Petrels, as well as Weddell Seals and Elephant Seals hauling out on the beach.

Later that day, we will try to land at Baily Head on the outer rim of Deception Island with a colony of ten thousands of Chinstrap Penguins, and we will attempt to make the exciting hike to Whalers Bay.

Deception Island is a huge volcano of which the crater opens into the sea, creating a natural harbour for the ship. Here we find hot springs, an abandoned whaling station, thousands of Cape Pigeons and many Dominican Gulls, Brown and South Polar Skuas and Antarctic Terns. Wilson's Storm Petrels and Black-bellied Storm Petrels nest in the ruins of the whaling station in Whalers Bay.

On our way further South we will sail to Cuverville Island, a small precipitous island, nestled between the mountains of the Antarctic Peninsula and Danco Island. It contains a large colony of Gentoo Penguins and breeding pairs of Brown Skuas. In Neko Harbour we will have the opportunity to set foot on the Antarctic Continent in a magnificent landscape of huge glaciers. On Danco Island we can observe Chinstrap Penguins and possibly Weddell and Crabeater Seals. In Neko Harbour we will have the opportunity to set foot on the Antarctic Continent in a magnificent landscape of huge glaciers, other continent landings are for example possible on Portal Point . During the cruise we will also offer zodiac cruises such as near Foyen Harbour on Nansen Island and Neko Harbour.

When sailing to Paradise Bay, with its myriad icebergs and deep cut fjords, we will have the opportunity for zodiac cruising between the icebergs in the inner parts of the fjords. In this area we have good chances to see Humpback Whales and Minke Whales.

After sailing through the Neumayer Channel, we visit the British research station and post office Port Lockroy on Goudier Island. Close to Port Lockroy we can also offer a landing on Jougla Point with Gentoo Penguins and Imperial Shags.

Sailing north, we arrive at the Melchior Islands with a very beautiful landscape and again possibilities for zodiac cruising among the icebergs, where we may encounter Leopard Seals, Crabeater Seals and whales.

**Day 9 – 10:** Back in the Drake Passage our way to Ushuaia.

**Day 11:** We arrive in the morning in Ushuaia and disembark.

## Cabins

M/v Plancius accomodates 53 passenger cabins, all with private toilet and shower, as follows:

4x Triple cabin with private facilities  
39x Twin cabins with private facilities,  
lower berths (two single beds)  
10x Superior cabins with private  
facilities, double beds



# Deckplan

