



# Antarctica Peninsula



**MV POLAR STAR**

# Antarctica Peninsula

*It can be a lifelong ambition – to reach the Seventh Continent. It is certainly one of the most unique places on earth – where nature rules and where mankind has collectively agreed to manage this vast continent through the Antarctic Treaty in pursuit of peace and science. The wildlife and astonishing landscapes will amaze even the most seasoned traveler. This Classic itinerary cruises the Southern Ocean to the South Shetland Islands and the Antarctic Peninsula seeking some of the best historic and wildlife sites of the Continent.*

## **ITINERARY (11 days / 10 nights)**

**DAY 1: Argentina.** Embark in **Ushuaia**.

**DAYS 2 & 3: At Sea.** The ship heads across the Drake Passage crossing the Antarctic Convergence. While **at sea**, take time onboard to learn about Antarctica, the wildlife and the Antarctic Treaty.

**DAYS 4 – 6: Antarctica.** For three days, explore the west coast of the Antarctic Peninsula with continental and island landings as well as Zodiac cruising. During this time in this untouched wilderness expect to see Gentoo, Adelie and Chinstrap penguins, possibly Fur, Weddell, Crabeater and Leopard seals, as well as Minke, Humpback and other whale species. Visits are planned to sites such as **Petermann Island, Port Lockroy, Paradise Bay, Pleneau Island, Neumeyer Channel, Lemaire Channel** and **Neko Harbour**.

**DAYS 7 & 8: South Shetland Islands.** Landings are planned at **Whaler's Bay** and **Half Moon Island**. Here rookeries are inhabited by Chinstrap and Gentoo penguins. The landscape is volcanic, its appearance a dramatic combination of steaming black lava sands and vast expanses of permanent ice.

**DAYS 9 & 10: At Sea.** Heading back to Ushuaia, take time while **at sea** to review recent experiences and learn more during informative lectures.

**DAY 11: Argentina.** Disembark in **Ushuaia**.

*(Please note that this is our planned itinerary – actual execution is subject to weather, ice and IAATO Ship Scheduler limitations. PSE reserves the right to adjust the itinerary as needed without recourse.)*

## **MV POLAR STAR- POLAR STAR EXPEDITIONS**



The **M/V Polar Star** (ex-icebreaker) is a safe and comfortable ice class vessel – certified for worldwide international voyages and complying with all SOLAS, ISM, ISPS and MARPOL regulations for safety and environment. In 2000 the ship was completely retrofitted and upgraded specifically for expedition cruising. The ship has exceptional redundancy with 4 engines. What this means is that it is extremely unlikely that the ship would ever be unable to keep to schedule due to operational difficulties. Owned by Karlsen Shipping Norway and operated by Karlsen Shipping Company in Halifax, Canada, it draws from the experience gained from a company heritage of over 100 years of vessel operation in the Polar Regions.

The M/V Polar Star is large enough to voyage to remote areas in comfort and small enough to enter out of the way destinations that other vessels can only sail by. We explore nature's most breathtaking wonders up close and our voyages offer magnificent wildlife on a journey that is spirited with adventure.

Our customers tell us that we have some of the "industry bests" on board including a very spacious bridge with an open bridge policy, large observation lounge/lecture hall with seating for all passengers, one of the best standard cabins (our K3) and a superior amount of outside viewing areas. Additional common areas include a shop, sumptuous library, bar, fitness facility and a dining room that seats all passengers in one sitting. Our varied international menu is prepared fresh onboard. Our 45 cabins include 31 doubles, 4 superior cabins and 6 suites (all with private facilities), plus an additional 4 cabins with shared facilities.

Length: 86.5 metres

Beam: 21.2 metres

Draft: 9.85 metres

Tonnage: 4998 GRT

Type: 105 passenger maximum ( 100 in Antarctica)

Propulsion: Diesel Electric, 12,000Bhp

Bow-Thruster: 750Bhp

Speed: 15 knots max; 11.5 knots cruising

Call Sign: 8PPK

Class: DNV + 1A1 Ice 1A\*

#### **Cabins:**

**K1 – TRIPLE/DOUBLE CABINS:** Two lower and one upper berths. Sharing toilet, shower and washbasin with next cabin. Approx 100 sq.feet/10 sq. metres. Portholes. May be sold as a triple or double share (no single supplement. Cabins Numbers:324, 326, 328, 330

**K2 – DOUBLE CABINS:** Two lower beds. Private bathroom with shower, toilet and washbasin. Approx 115 sq. feet/11.5 square metres. Large windows. K2 cabins on deck 3 have a partially obstructed view and one window opens. K2 cabins on deck 4 have non opening windows. May be sold as a double or single (with payment of single supplement). Cabins Numbers: 335, 336, 337, 338, 411, 412, 413, 414, 415, 416, 417, 419, 420, 421, 422.

**K3 – DOUBLES CABINS:** Two lower beds. Private bathroom with shower, toilet and washbasin. Approx 115 sq. feet/11.5 square metres. Large windows, one opens. May be sold as a double or single (with payment of single supplement). Cabins Numbers: 333, 334, 339, 340, 341, 342, 423, 424, 425, 426, 427, 428, 429, 430, 431, 432

**K4 – SUPERIOR CABINS:** Double bed and couch which can be made up as a bed. Private bathroom with shower, toilet washbasin. Approx. 140 sq. feet/14 sq. metres. Side and aft facing windows, one opens. May be sold as a double, triple or single (with payment of single supplement). Cabins Numbers: 343, 344, 433, 434.

**K6 – MINI SUITES:** Double bed (some in alcove) and couch which can be made up as a bed in some. Private bathroom with shower, toilet washbasin. Approx. 180 sq. feet/18 sq. metres. Large windows, some with one opening. May be sold as a double, triple or single (with payment of single supplement). Cabins Numbers: 331, 332, 409, 410, 418, 507, 508.

**K7–SUITES:** Sleeping area in separate room (double bed in 501, 2 singles in 401 – can convert to double). Private bathroom with shower, toilet washbasin. Approx. 250 sq. feet/25 sq. metres. Forward and side facing windows, some open. May be sold as a double or triple. Cabins Numbers: 401, 501.

K1 Cabin



K2 Cabin



K3 Cabin



K4 Cabin



### Services:

**Observation Lounge:** Our observation lounge is the perfect place to unwind in between activities. Here you can enjoy a pre-dinner drink, meet with new friends, play cards or simply enjoy the views from our large, panoramic windows. The observation lounge is also the epicenter of onboard activities, the location for daily recaps, lectures, briefings, film screenings and other events. There is a 24-hour self-serve refreshment station which includes coffee and tea.

**Dining Room:** Located on deck 3, our dining room is equipped to seat all our passengers at one time and operates on an open seating policy, creating an informal setting. Here, you will be treated to a varied and delicious international cuisine prepared by our talented chefs and served by our friendly stewardesses. A selection of entrees is offered at each meal with vegetarian option available. BAR

The cozy Polar Bar can be found on deck 4 and is usually open from shortly after dinner until the wee hours – a great place to mingle with fellow passengers in a casual atmosphere. Passengers can also utilize our bar in the observation lounge, open before dinner each evening and at times during the day.

**Library:** Sometimes it is nice to have some quiet time to soak up the experiences of the day or curl up with a good book. Our charming library provides just that opportunity. The library is located on deck 5 and is stocked with board games for leisure hours at sea, reference materials, novels and paperbacks. Our paperback section operates on a "leave and lend" basis.

**Gym:** For those extra energetic passengers, we have a mini gym on deck 4, equipped with a treadmill, bicycles, rowing machine, weight machine, mat, exercise ball and towels.

**Onboard Shop:** Located on deck 3 next to reception, the shop is stocked with a variety of souvenirs, including clothing, postcards and jewelry and a selection of basic personal items to help you through the trip.

**Treatment Room:** We have a doctor onboard each expedition who is on-call 24 hours a day. The treatment room is located on deck 3 and is equipped with basic medications and medical equipment.

**Wet Room:** On deck 3, our wet room provides a place to dry and store lifejackets, boots and jackets when you return from your landing ashore. It is located next to the gangway where Zodiacs are loaded and unloaded.

**Reception:** Located mid-ship on Deck 3 this is your first stop upon embarking the ship on Day 1. Regular operating hours are from 7:00am to 11:00pm. These hours may vary slightly depending on the daily schedule. During these hours, the Hotel Manager and/or Office Manager will be available to assist you with any requests that will make your time onboard as enjoyable and comfortable as possible. A safe is available to store any valuables you may have with you.

**Email:** We can provide contact with the outside world while you are onboard with us. For a fee, you can set up an email account and for the duration of the trip, send and receive emails from your own personal email address. This way, you can keep friends and family updated on your daily adventures!

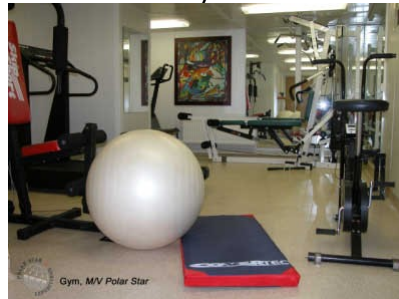
**Phone/Fax:** If you need to make a telephone call or send a fax, you can do so for a fee using our Iridium satellite phone and fax machine on the bridge. Please speak to any of the officers onboard the bridge and they can assist you.

**Laundry:** A laundry service is available onboard. Each cabin is supplied with laundry bags and forms. Bags will be collected each morning with clean items returned within 48 hours

Bar



Gym



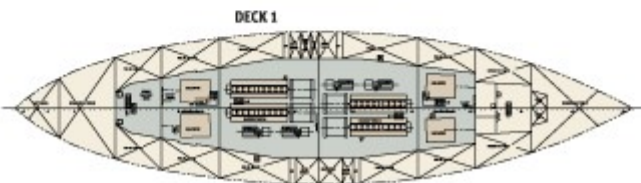
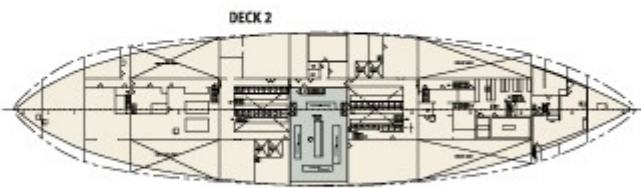
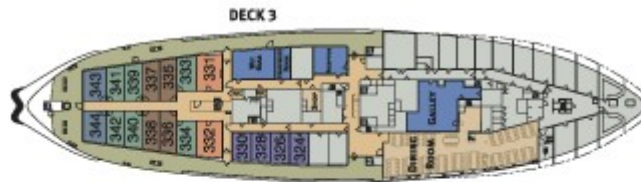
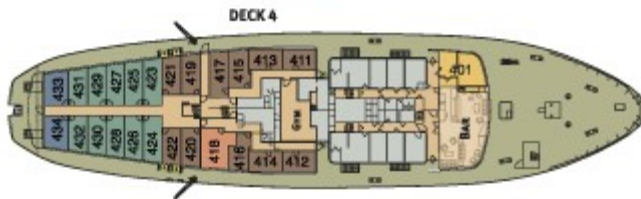
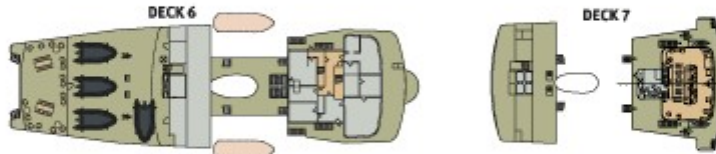
Library



Observation Lounge



# Deck Plans



- Common Areas
- Crewmess
- Officer Deck
- Designated Areas
- RESTRICTED AREAS - TOURS ONLY
- NO ADMITTANCE AT ALL

