



# Antarctica Peninsula - Christmas



**MV POLAR STAR**

**Antarctic Peninsula - Christmas**

Although it is the Austral Summer, it may seem to be a Winter Wonderland and the perfect place to celebrate Christmas and the Holiday Season. On this magical journey explore the World's largest wilderness with historic sites and wildlife – see penguins, seals, seabirds and whales in their natural environment. Each day will also celebrate one of the different holiday traditions from around the world. This seems fitting while in a land effectively owned by no one, yet collectively managed and protected by the Antarctic Treaty Nations.

## **ITINERARY (12 days / 11 nights)**

**DAY 1: Argentina.** Embark in **Ushuaia**.

**DAYS 2 & 3: At Sea.** As the ship steams across the **Drake Passage**, the program of informative lectures begins and a constant watch for birds and marine wildlife is kept.

**DAYS 4 – 7: Antarctica.** Cruise amongst the islands and in the fjords and bays watching for whales surfacing, seals basking on ice floes and penguin activity along the shores. There is excellent Zodiac cruising in places such as **Neko Harbour** and **Paradise Bay**. Landings are planned at historic and wildlife sites such as **Petermann Island, Port Lockroy** and **Vernadsky**.

**DAYS 8 & 9: South Shetland Islands.** At the top of the Antarctic Peninsula, these islands are well known for penguin rookeries and the black lava sands of **Whaler's Bay** on **Deception Island**. Landings in these islands may also include **Hannah Point, Arctowski** and **Penguin Island**.

**DAYS 10 & 11: At Sea.** Time **at sea** is filled with lectures, recaps, watching for wildlife and time to relax.

**DAY 12: Argentina.** Disembark in **Ushuaia**.

*(Please note that this is our planned itinerary – actual execution is subject to weather, ice and IAATO Ship Scheduler limitations. PSE reserves the right to adjust the itinerary as needed without recourse.)*

## **MV POLAR STAR- POLAR STAR EXPEDITIONS**



The **M/V Polar Star** (ex-icebreaker) is a safe and comfortable ice class vessel – certified for worldwide international voyages and complying with all SOLAS, ISM, ISPS and MARPOL regulations for safety and environment. In 2000 the ship was completely retrofitted and upgraded specifically for expedition cruising. The ship has exceptional redundancy with 4 engines. What this means is that it is extremely unlikely that the ship would ever be unable to keep to schedule due to operational difficulties. Owned by Karlsen Shipping Norway and operated by Karlsen Shipping Company in Halifax, Canada, it draws from the experience gained from a company heritage of over 100 years of vessel operation in the Polar Regions.

The M/V Polar Star is large enough to voyage to remote areas in comfort and small enough to enter out of the way destinations that other vessels can only sail by. We explore nature's most breathtaking wonders up close and our voyages offer magnificent wildlife on a journey that is spirited with adventure.

Our customers tell us that we have some of the "industry bests" on board including a very spacious bridge with an open bridge policy, large observation lounge/lecture hall with seating for all passengers, one of the best standard cabins (our K3) and a superior amount of outside viewing areas. Additional common areas include a shop, sumptuous library, bar, fitness facility and a dining room that seats all passengers in one sitting. Our varied international menu is prepared fresh onboard. Our 45 cabins include 31 doubles, 4 superior cabins and 6 suites (all with private facilities), plus an additional 4 cabins with shared facilities.

Length: 86.5 metres

Beam: 21.2 metres

Draft: 9.85 metres

Tonnage: 4998 GRT

Type: 105 passenger maximum ( 100 in Antarctica)

Propulsion: Diesel Electric, 12,000Bhp

Bow-Thruster: 750Bhp

Speed: 15 knots max; 11.5 knots cruising

Call Sign: 8PPK

Class: DNV + 1A1 Ice 1A\*

#### **Cabins:**

**K1 – TRIPLE/DOUBLE CABINS:** Two lower and one upper berths. Sharing toilet, shower and washbasin with next cabin. Approx 100 sq.feet/10 sq. metres. Portholes. May be sold as a triple or double share (no single supplement. Cabins Numbers:324, 326, 328, 330

**K2 – DOUBLE CABINS:** Two lower beds. Private bathroom with shower, toilet and washbasin. Approx 115 sq. feet/11.5 square metres. Large windows. K2 cabins on deck 3 have a partially obstructed view and one window opens. K2 cabins on deck 4 have non opening windows. May be sold as a double or single (with payment of single supplement). Cabins Numbers: 335, 336, 337, 338, 411, 412, 413, 414, 415, 416, 417, 419, 420, 421, 422.

**K3 – DOUBLES CABINS:** Two lower beds. Private bathroom with shower, toilet and washbasin. Approx 115 sq. feet/11.5 square metres. Large windows, one opens. May be sold as a double or single (with payment of single supplement). Cabins Numbers: 333, 334, 339, 340, 341, 342, 423, 424, 425, 426, 427, 428, 429, 430, 431, 432

**K4 – SUPERIOR CABINS:** Double bed and couch which can be made up as a bed. Private bathroom with shower, toilet washbasin. Approx. 140 sq. feet/14 sq. metres. Side and aft facing windows, one opens. May be sold as a double, triple or single (with payment of single supplement). Cabins Numbers: 343, 344, 433, 434.

**K6 – MINI SUITES:** Double bed (some in alcove) and couch which can be made up as a bed in some. Private bathroom with shower, toilet washbasin. Approx. 180 sq. feet/18 sq. metres. Large windows, some with one opening. May be sold as a double, triple or single (with payment of single supplement). Cabins Numbers: 331, 332, 409, 410, 418, 507, 508.

**K7-SUITES:** Sleeping area in separate room (double bed in 501, 2 singles in 401 – can convert to double). Private bathroom with shower, toilet washbasin. Approx. 250 sq. feet/25 sq. metres. Forward and side facing windows, some open. May be sold as a double or triple. Cabins Numbers: 401, 501.

K1 Cabin



K2 Cabin



K3 Cabin



K4 Cabin



### Services:

**Observation Lounge:** Our observation lounge is the perfect place to unwind in between activities. Here you can enjoy a pre-dinner drink, meet with new friends, play cards or simply enjoy the views from our large, panoramic windows. The observation lounge is also the epicenter of onboard activities, the location for daily recaps, lectures, briefings, film screenings and other events. There is a 24-hour self-serve refreshment station which includes coffee and tea.

**Dining Room:** Located on deck 3, our dining room is equipped to seat all our passengers at one time and operates on an open seating policy, creating an informal setting. Here, you will be treated to a varied and delicious international cuisine prepared by our talented chefs and served by our friendly stewardesses. A selection of entrees is offered at each meal with vegetarian option available. BAR

The cozy Polar Bar can be found on deck 4 and is usually open from shortly after dinner until the wee hours – a great place to mingle with fellow passengers in a casual atmosphere. Passengers can also utilize our bar in the observation lounge, open before dinner each evening and at times during the day.

**Library:** Sometimes it is nice to have some quiet time to soak up the experiences of the day or curl up with a good book. Our charming library provides just that opportunity. The library is located on deck 5 and is stocked with board games for leisure hours at sea, reference materials, novels and paperbacks. Our paperback section operates on a "leave and lend" basis.

**Gym:** For those extra energetic passengers, we have a mini gym on deck 4, equipped with a treadmill, bicycles, rowing machine, weight machine, mat, exercise ball and towels.

**Onboard Shop:** Located on deck 3 next to reception, the shop is stocked with a variety of souvenirs, including clothing, postcards and jewelry and a selection of basic personal items to help you through the trip.

**Treatment Room:** We have a doctor onboard each expedition who is on-call 24 hours a day. The treatment room is located on deck 3 and is equipped with basic medications and medical equipment.

**Wet Room:** On deck 3, our wet room provides a place to dry and store lifejackets, boots and jackets when you return from your landing ashore. It is located next to the gangway where Zodiacs are loaded and unloaded.

**Reception:** Located mid-ship on Deck 3 this is your first stop upon embarking the ship on Day 1. Regular operating hours are from 7:00am to 11:00pm. These hours may vary slightly depending on the daily schedule. During these hours, the Hotel Manager and/or Office Manager will be available to assist you with any requests that will make your time onboard as enjoyable and comfortable as possible. A safe is available to store any valuables you may have with you.

**Email:** We can provide contact with the outside world while you are onboard with us. For a fee, you can set up an email account and for the duration of the trip, send and receive emails from your own personal email address. This way, you can keep friends and family updated on your daily adventures!

**Phone/Fax:** If you need to make a telephone call or send a fax, you can do so for a fee using our Iridium satellite phone and fax machine on the bridge. Please speak to any of the officers onboard the bridge and they can assist you.

**Laundry:** A laundry service is available onboard. Each cabin is supplied with laundry bags and forms. Bags will be collected each morning with clean items returned within 48 hours

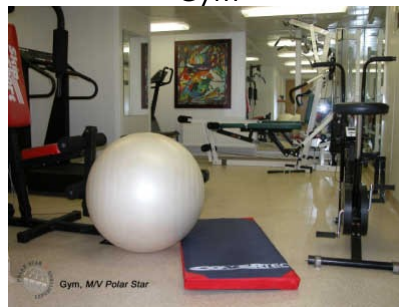
Bar



Library



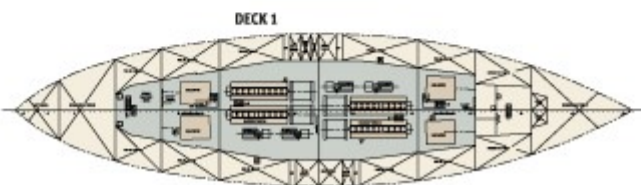
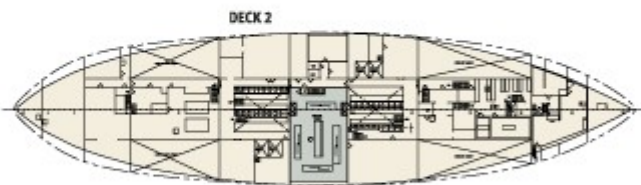
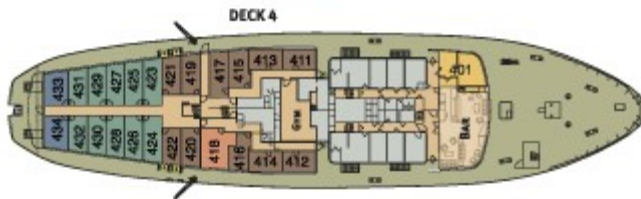
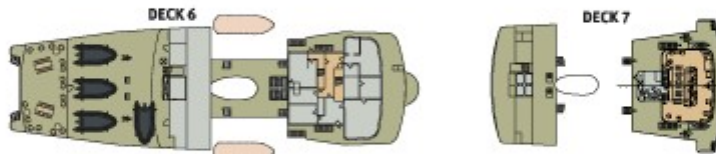
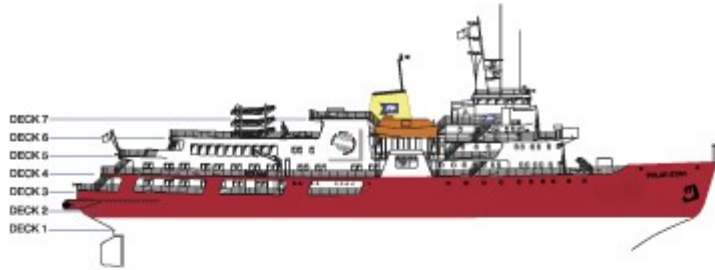
Gym



Observation Lounge



# Deck Plans



- Common Areas
- Crewmess
- Officer Deck
- Designated Areas
- RESTRICTED AREAS - TOURS ONLY
- NO ADMITTANCE AT ALL

